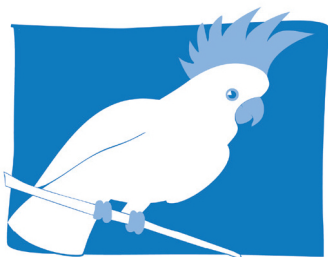


Smoke Evacuation System Comparison Matrix

		Cockatoo Blue IPSES	Stand Alone Systems	Centralised Systems
		System Consists of:	System Consists of:	System Consists of:
Features and Design / Installation Considerations	Why is this feature / consideration important?	<ul style="list-style-type: none"> 1 x Motor Turbine Pump per Theatre Motor Turbine is located outside the operating theatre either in Plant Room or Roof Space Pipes and cables running through the Pendant Filter box in the pendant or remote 	<ul style="list-style-type: none"> 1 x Machine per Theatre Suction Motor located inside Theatre Filter is located in Machine 	<ul style="list-style-type: none"> Motor Turbine Pump services all Theatres at once Motor Turbine is located outside the operating theatre in Plant Room Pipes and cables running through the Pendant Filter is either located in theatre or in some cases in Plant Room
Filtered air should be exhausted externally from Theatre	Full filters can pass-through virus and carcinogenic gases. If the system recycles air these contaminants are recycled. Does the system exhaust the filtered air outside theatre?	✓ [External Exhaust]	✗ [Recycled Air]	✓ [External Exhaust]
System CREATES NO NOISE in Theatre	No Pumps/Turbines in Theatre = No noise in Theatre	✓ [No Noise]	✗ [Creates Noise]	✓ [No Noise]
Filter Cost - Long Life Filters	Standards require a 3 Stage Filter - Pre-filter, ULPA Filter and Charcoal Filter	✓ [Single Long Life]	??? [Varies some suppliers have multiple filters]	??? [Varies some suppliers have multiple filters]
Low power usage	Some systems only need to be turned on during a specific procedure - while some Centralised Systems must run a large pump all day to service every potential theatre	✓ [Low Power]	✓ [Low Power]	✗ [Highest Power Usage]
Ease of use	To reduce noise levels stand alone systems have complicated remote controls and variable power settings	✓ [Just press the ON/OFF Button]	✗ [Complicated Remote Controls]	??? [Complexity varies per supplier]
If a system breaks down how many theatres are affected?	A centralised system breakdown could take out the entire theatre complex. With the IPSES design each Theatre has its own dedicated pump and pipes.	✓ [Only ONE Theatre affected]	✓ [Only ONE Theatre affected]	✗ [ENTIRE complex will be affected]
System Pumps/Turbines can be located outside Theatre in Plant Room	Externally Located Pumps/Turbines = NO NOISE, More space in Theatre	✓ [External]	✗ [Internal]	✓ [External]
System Pumps/Turbines can be located outside Theatre in Roof Space	Externally Located Pumps/Turbines = NO NOISE, More space in Theatre	✓ [External]	✗ [Internal]	✗ [Unavailable]
Pressure balancing of air conditioning across a Theatre Complex	A centralised system that connects all theatres with one set of interconnected pipes creates potential issues with Pressure Balancing and Cross Contamination. With the IPSES design each Theatre has its own dedicated pump and pipes, eliminating pressure variance issues.	✓ [No balancing issues. Theatres not connected]	✓ [No balancing issues. Theatres not connected]	✗ [Balancing MUST BE addressed]
Australian Designed and Assembled	Support local jobs & industry. Local manufacturing ensures fast consistent supply of parts and service.	✓ [Australian designed and assembled]	✗ [Not Australian made]	✗ / ??? [Content may vary per Supplier]
Meets Australian Standards	Australian Standard AS 16571:2015 has been released	✓ [Conforms to AS 16571]	??? [Ask for Conformity Declaration]	??? [Ask for Conformity Declaration]



cockatooblue
Medical Products Pty Ltd

Manufacturer: Cockatoo Blue Medical Products

9 Edina Road,
Ferntree Gully
Victoria 3156
AUSTRALIA

Priority Phone: +61 3 9758 7707
e-mail: info@cockatoooblue.com





T +613 9550 1819
M + 61 409 865 105
E Info@Endovision.com.au
W Endovision.com.au